



Scuba Hose Fittings & Custom Assemblies

Dive Lab can assemble Low Pressure Hoses for most Scuba Regulator applications.

The standard hose which Dive Lab uses is a 5/16" I.D. (7.9mm) hose. The hose is manufactured by The Gates® Rubber Company, and is specifically designed for air breathing use. The hose has a rated working pressure of 500 PSIG (34 BAR).

The Gates' Air Master Scuba 500 meets the requirements of EN 250-2014 and has a minimum burst pressure in excess of 2000 PSIG (137 BAR).

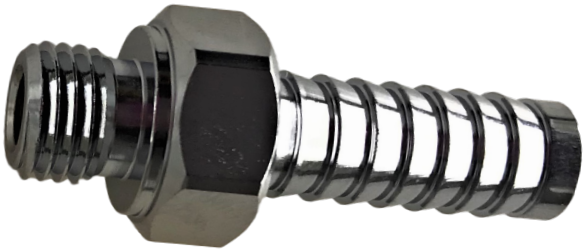
Contact Dive Lab by email at divelab@divelab.com or for questions call at 850-235-2715 or fax 850-235-0858.



Scuba Hose Fittings

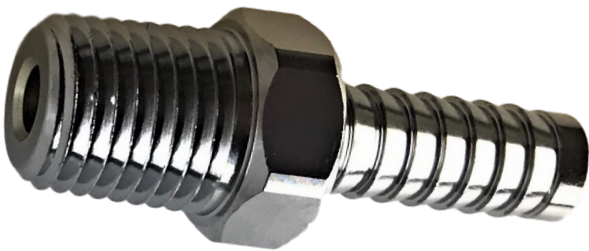


1/2" - 20 (Large Bore Scuba) 5/16" Barb



3/8" - 24 (Small Bore Scuba) -
5/16" Barb

Standard fitting used to connect Low Pressure hoses to first stage scuba regulators



1/4" - Male NPT - 5/16" Barb

Standard fitting used attaching EGS Quick Disconnects to hose assembly

Note: Pictures have been enlarged to show detail



Scuba Hose Fittings



9/16" -18 UNF Female - 5/16" Barb
Standard fitting used to connect Low Pressure hoses to second stage scuba regulators



Crimping Sleeve
Used for crimping hoses to the Barbs



AGA Regulator Connection Fitting
Used to connect Low Pressure hoses to AGA second stage scuba regulators



5/16" ID Low Pressure Scuba Hose - 500 PSI working pressure
Hoses can be any length from 6" and up to 200' long with any combination of end fittings as per client request

Note: Pictures have been enlarged to show detail



EGS Locking Quick Disconnect Fittings



EGS Locking Quick Disconnect Fittings 1/4" Female NPT - QD
Can be purchased in Stainless Steel or Brass, as per client request



Note: Pictures have been enlarged to show detail



EGS Whip Assembly

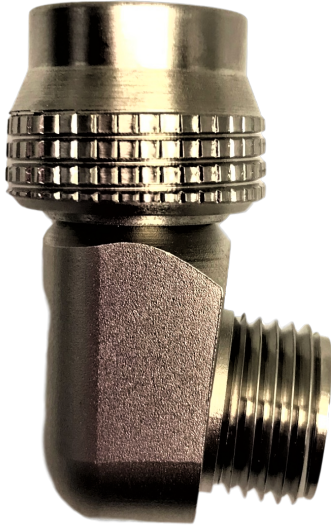


Complete EGS Whip Assembly
Custom Hose lengths varies per client request

Note: Pictures have been enlarged to show detail



AGA Hose Fittings



AGA Female to 9/16"-18 Male
98° Swivel

Made by OmniSwivel International



AGA Insert Female to 5/16" Hose Barb
Standard 5/16" Hose Barb to AGA Female

Made by OmniSwivel International

Note: Pictures have been enlarged to show detail