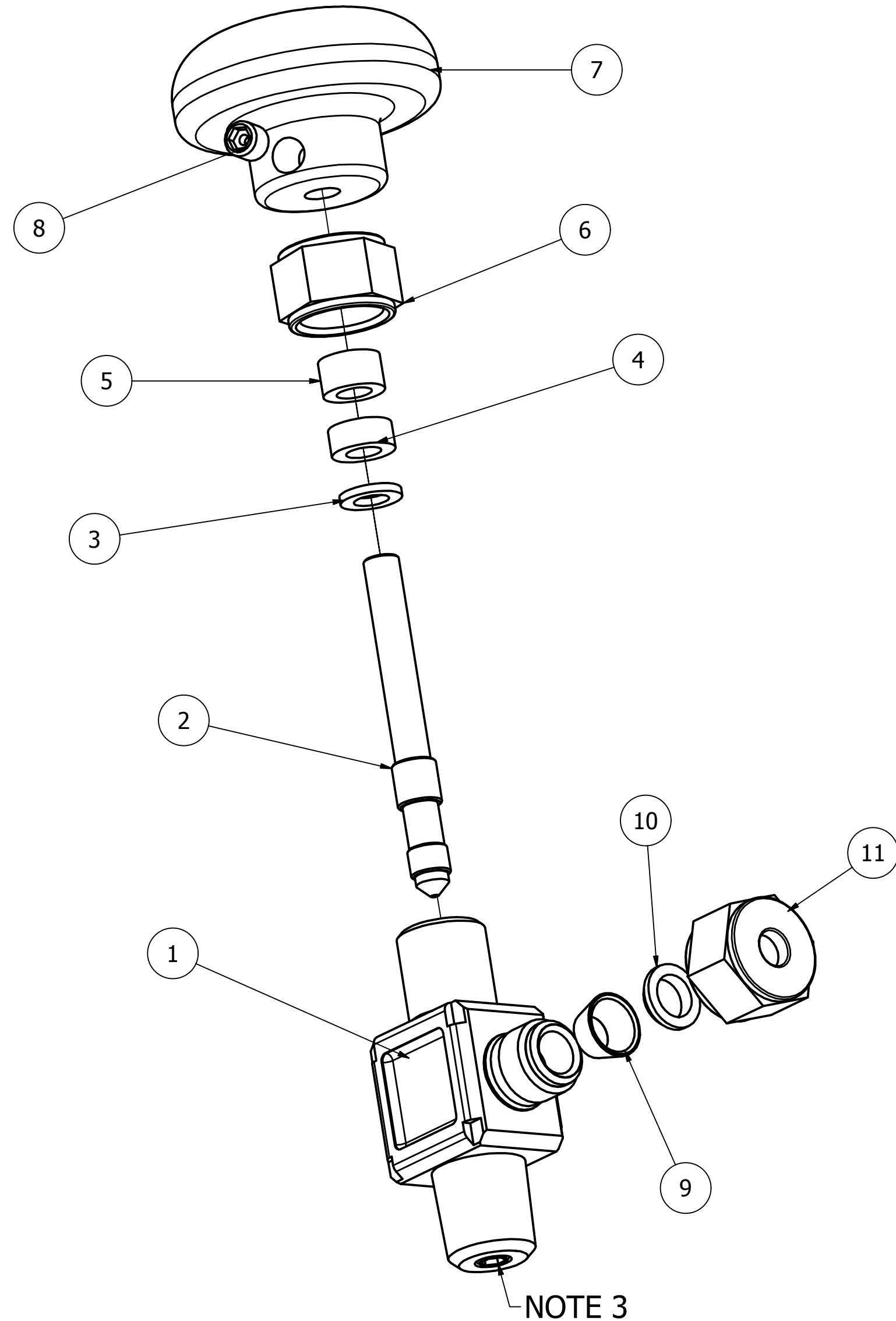


NOTES:

1. INDIVIDUAL COMPONENTS ARE CALLED OUT FOR REFERENCE ONLY. MOST COMPONENTS ARE NOT AVAILABLE INDIVIDUALLY FOR PURCHASE. REFER TO OVERHAUL/REPAIR KITS TABLE (DRAWING NO 7033) FOR SERVICE KITS.
2. PRE ASSEMBLY REQ. IAW DIVE LAB QA MANUAL, DOCUMENT (XLDSPROOF22111 1B MW), MANUFACTURING REQUIREMENTS DWG# 7737

3. VALVE BODY, ITEM 1 HAS BEEN MODIFIED FOR A PERMANENT FLOW RESTRICTOR.



| | | | |
|--------------------|-------------------|-----------------|------|
| 1 | 1XL6C-11 | NUT | 11 |
| 1 | 1XLC-10 | WASHER, FERRUL | 10 |
| 1 | 1XL6-9 | FERRUL | 9 |
| 2 | 1XL6-8 | SET SCREW, KNOB | 8 |
| 2 | 1XL6-7 | KNOB | 7 |
| 1 | 1XL6-6 | NUT, STEM | 6 |
| 1 | 1XL6-5 | SPACER | 5 |
| 1 | 1XL6-4R | PACKING | 4 |
| 1 | 1XL6-3R | WASHER | 3 |
| 1 | 1XL6-2 | STEM | 2 |
| 1 | 1XL6-1 | BODY | 1 |
| QTY | DIVE LAB PART NO. | DESCRIPTION | ITEM |
| PNEUMO VALVE, 1XL6 | | | |

| | | | |
|-----------------------|-----------|--------------------------------------|--------------|
| DRAWN MIKE S. WARD | 8/22/2005 | Dive Lab Inc. | |
| CHECKED R.H. QA | 1/12/2012 | | |
| MFG | | PNEUMO VALVE SOFT SEAT (MODIFIED) | |
| APPROVED M.F. WARD | 1/12/2012 | SIZE C | REV - |
| | | DWG NO 7019 | SHEET 1 OF 1 |
| | | SCALE | |

| | |
|--|--|
| MATERIAL | DIVE LAB INC. 1415 MOYLAN ROAD, PANAMA CITY BEACH, FL 32407 VOICE: 850-235-2715 FAX: 850-235-0858 |
| COPYRIGHT 2011 DIVE LAB INC. | |
| .X+- .032 .XX +- .01 .XXX +- .005 √63 UNSPECIFIED SURFACES | |