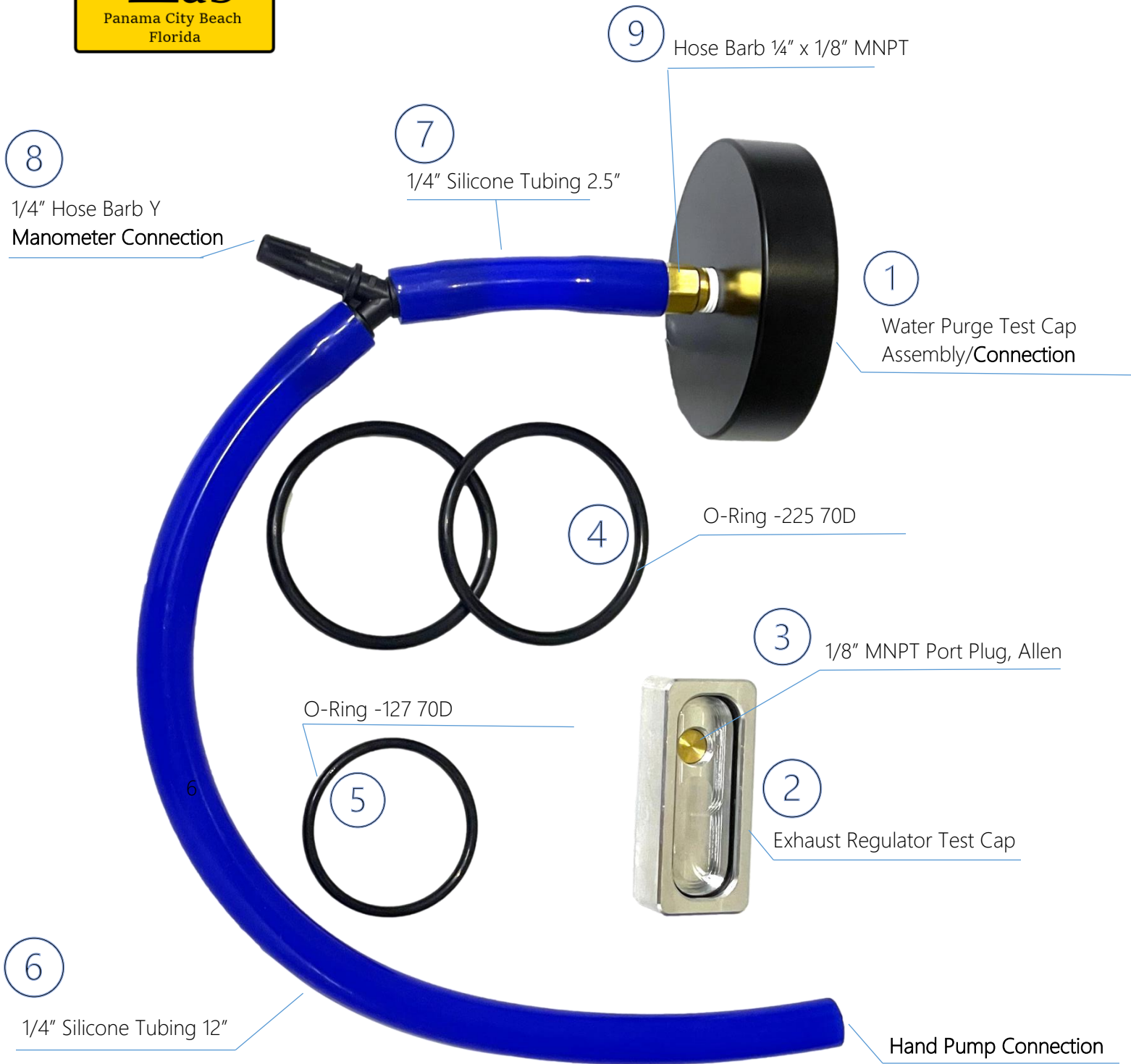




# PART# DL-D01 DIAMOND TRAINING TEST KIT





# PART# DL-D01

## DIAMOND TRAINING TEST KIT

**The Diamond Training Test Kit P/N DL-D01 is required for KMDSI Instructors training with P/N 525-655 - KM Diamond Dealer Training Kit**

This kit will allow testing of the Water Purge Assembly **P/N 505-378** & Diamond Exhaust Assembly **P/N 505-400** without requiring the assemblies to be mounted in the helmet

PART# <b>DL-D01</b>	DIAMOND TRAINING TEST KIT includes:
D-T-WPTC	1. Water Purge Test Cap Assembly
D-T-EXRTC	2. Exhaust Regulator Test Cap
D-T-PPA18	3. 1/8" MNPT Port Plug, Allen
O-RG12770	4. O-Ring -225 70D (1 Required & 1 Spare Included)
O-RG22570	5. O-Ring -127 70D (1 Required & 1 Spare Included)
DL-T-D-12	6. 1/4" Silicone Tubing 12"
DL-T-D-2.5	7. 1/4" Silicone Tubing 2.5"
D-T-HBY2	8. 1/4" Hose Barb Y
DL-VPT-A	9. Hose Barb 1/4" Barb X 1/8" MNPT

### NOTE

This kit is **not included in the DL-D00 - Diamond Set Up & Test Kit**